

SH-Series COMPACT HYDRAULIC PRESS

Available in 2.5 - 15 Ton



COMPACT, HIGH SPEED, BENCH TOP HYDRAULIC PRESS

OVERVIEW

SH-Series Hydraulic Press is a mid-range compact, high-speed hydraulic press designed to satisfy a wide range of production's needs. This press package comes standard with a 240V/480V, 3 phases, self-contained hydraulic power unit and an air/oil heat exchanger for those high duty production applications.

WHAT MAKES US BETTER?

Our team at Air-Hydraulics will work closely with you to design one of our SH-Series Hydraulic Presses to suit your needs. You'll have the peace of mind in knowing that your press will be built using only quality components and tailored workmanship. Along with quality, you get a hydraulic press designed with an open architectural control system. This gives you flexibility to add control integration and/or process monitoring now or when you need to.

ADVANTAGES

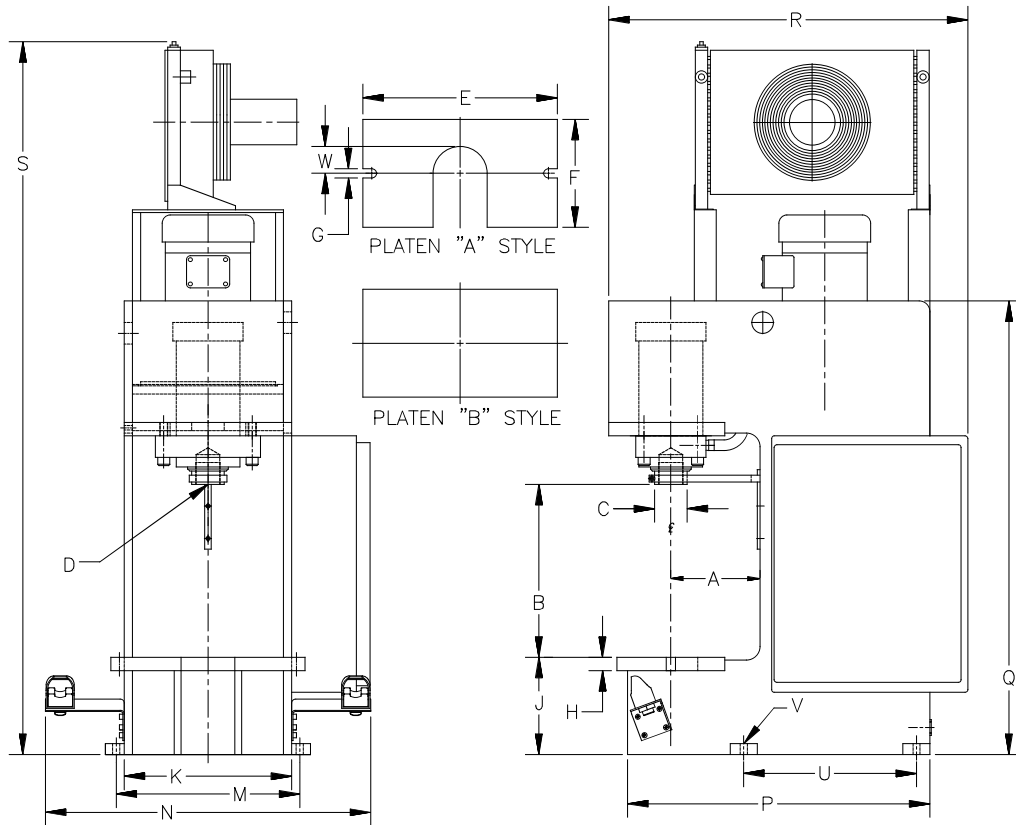
- Heavy Duty Hydraulic Cylinder
- Standard Two-Hand Non-Tie Down Controls
- Air / Oil Heat Exchanger
- Minimal Heat Generated
- Heavy Duty C-Frame Construction
- A Variety of Open Architectural Designed Controls
- Ability To Custom Design To Meet Your Application Specs



SPECIFICATIONS

Description	Model SH-250	Model SH-300/400	Model SH-500
Force Range	2,000 lbs. - 5,000 lbs.	3,500 lbs. – 20,000 lbs.	7,400 lbs. – 30,000 lbs.
Stroke (Standard)	6"	6"	6"
Cylinder Bore	3.250"	4"	5"
Ram Diameter	1.375"	2.000"	3.000"
Reservoir Capacity	16 Gallons	23 Gallons	25 Gallons
Motor H.P.	3 HP / 1,800 RPM / 3 phase / TEFC	5 HP / 1,800 RPM / 3 phase / TEFC	5 HP / 1,800 RPM / 3 phase / TEFC
Daylight (Standard)	12"	14-1/2"	16"
Throat (Standard)	6.250"	6.250"	8.250"
Approx. Weight	700 lbs.	1,100 lbs.	1,700 lbs.
Floor Stand Weight	205 lbs.	205 lbs.	405 lbs.
Ram Speed I.P.M.			
Approach	420	300	165
Press	65	60	40
Return	440	320	210
Operating Pressure (P.S.I.)			
Minimum	250	250	250
Maximum	600	1,500	1,500

SH-SERIES PRESS DIMENSIONS



DIM KEY	DESCRIPTION (US inches)	SH-250	SH-3/400	SH-500
A	Throat Depth	6.25	6.25	8.25
B	Daylight	12.00	14.50	16.00
C	Ram Diameter	1.375	2.000	3.000
D	Ram Mounting	1 - 14	1.50 - 12	2.25 - 12
E	Platen Width	13.00	14.00	18.00
F	Platen Depth	6.00	8.00	10.00
G	Platen Slot	0.62 x 1.00	0.75 x 1.00	0.75 x 1.00
H	Platen Thickness	1.00	1.00	1.25
J	Platen To Floor	7.12	9.00	9.00
K	Frame Width	10.50	11.25	15.50
M	Mounting Hole Width	11.75	12.75	17.50
N	Overall Width	26.62*	21.88*	33.25*
P	Frame Depth	25.25	28.25	34.75
Q	Frame Height	32.75	39.50	43.25
R	Overall Depth	29.50*	30.00*	36.00*
S	Overall Height	44.00*	50.62*	52.00*
T	Back Foot Mounting	1.75	.75	1.00
U	Mounting Hole Depth	15.50	15.50	15.50
V	Mounting Hole	.65 DIA.	.65 DIA.	.65 DIA.
W	Platen Radius	2.00	2.00	2.50

* Denotes Approximate Dimensions

SH-SERIES FEATURES & OPTIONS

Our objective is to offer you a solution to your assembly and forming needs. If our standard features or available options do not meet your application requirements, please consult our factory to see about us offering an affordable solution to meet your design needs.

STANDARD FEATURES

- “Opto-Touch” Control Buttons, Non-Tie Down Control Circuit
- Rapid Ram Advance Using a Hi-Lo System
- Anti-Rotation Ram Guide
- 240V/480V, 3 Phase, Self-Contained Power Unit with Heat Exchanger
- Oil Level Gauge
- Nema Enclosure
- 120V Control Voltage

AVAILABLE OPTIONS

- Matching Floor Stands
- Pressure / Dwell / Distance Return Options
- Adjustable Downstop
- Jog Control Circuit
- Fault Circuit Control Package (E-FI)
- Increased Stroke Lengths
- Press Frame Modifications
- Other Voltage Options

CUSTOM DESIGNED OPTIONS

- Light Curtains & Guarding Packages
- PLC Control Options
- 4-Post and 2-Post Designs
- Load Cell & Distance Monitoring Packages
- Selectable Modes of Operation
- Control Systems Designed for Future Expansion
- Custom Tooling and Fixture Packages
- Emergency Stop Control Circuit
- 24vDC Control Circuit
- Linear Position Transducer
- Custom Control Packages

MODEL SH-500**15 TONS****6" Overall Stroke****14.00" Daylight Opening**
8.25" Throat Depth

SH-SERIES CONTROL PACKAGE OPTIONS

SH-Series Compact Hydraulic Press comes standard with basic two-hand non-tie down electric (110v) relay logic control package. Operator initiates and maintains both actuators at the same time to advance the press stroke. Once the operator releases one or both actuators, the ram returns to home position.

Auto Ram Return Options:

(Add to the above standard control package)

SH-PSTD: Pressure with Timer Return:

Pressure sensor initiates an adjustable press dwell timer which returns the ram

SH-PSDR: Distance Return

Adjustable distance sensor initiates returns the ram

SH-PSRR: Pressure Only Return:

Pressure sensor only initiates the return of the ram

SH-JCC: Jog Control Circuit

Operator initiates and maintains both actuators at the same time to advance the press stroke. If the operator releases one of both actuators during the downward stroke, the ram stops downward motion. The operator can either proceed with the downward cycle by re-initiating the actuators until the auto ram return option is met (see auto ram return options), or the operator can manually retract the ram to home position by pressing the manual ram return button

(Note: includes SH-PSTD Pressure with Timer Return as the standard auto ram return option)

Other Available Options:

(please consult factory)

- 24vDC Control Circuit • Programmable Logic Controller (PLC) • Emergency Stop Control Circuit • Light Curtains and Guarding
- Rod End Load Cell • Linear Position Transducer • Press Force and Distance Monitoring • Custom Designed Control Systems

ISO 9001 REGISTERED (WITH DESIGN)

Air-Hydraulics is committed to delivering quality products on time to achieve customer satisfaction. Air-Hydraulics uses a process approach to achieve this policy in accordance with ISO 9001 and is committed to continually improve at this process.

www.airhydraulics.com
info@airhydraulics.com
Phone: 1-800-837-4355